

MARY WADE



Family Newsletter

September 2024



Help Save A Life



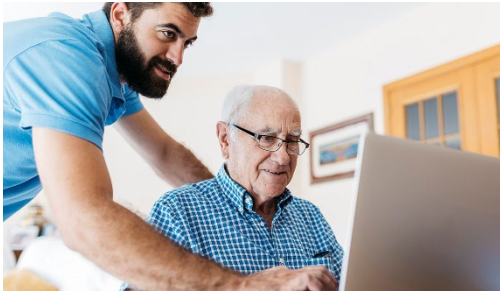
On **Thursday, September 12th** Chatham Place at Mary Wade will be hosting a Blood Drive from 1-6pm in the Harold S. Spitzer Activity Room. Please join us to give this simple gift! To make an appointment click [HERE](#) or call 1-800-RED-CROSS.

Family Fun Day



Get ready for Family Fun Day **Sunday, September 8** at Mary Wade from 1-4pm on Pine Street. What better way to celebrate National Grandparents' Day than joining your grandmother or

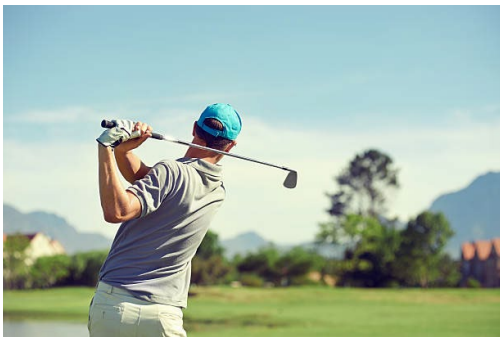
Developing A Plan For LTC



If you are looking ahead and planning for your long term care or the care of a loved one, you won't want to miss this event taking place

Wednesday, **September 18** from 5-7pm at Chatham Place at Mary Wade. We hope you will join us as we answer some of the most common questions about healthy living in the later years.

There's Still Time To Golf!



Join us **Wednesday, September 25th** at Lyman Orchards for a fun day of golf and camaraderie at the Mary Wade Golf Tournament. All skill levels are welcome. Golfers receive a full round of golf on the award-winning Robert Trent Jones Signature Course, including carts, luncheon and cocktails. It'll be a great day for a great cause: the Boardman Building Renovation Project. This is the major fundraising event this year for Mary

grandfather for games, music, baked goods, popcorn, cotton candy, a pizza truck and more. Click [HERE](#) for more information. We hope to see you there!

If you are interested in baking for the Family Fun Day Bake Sale please contact Rosanne Mondrone at RMondrone@marywade.org.

Mobile Market



The Mobile Market is back **September 19**, and **October 24** from 10:30-11:30am. Get your fresh fruit, fresh vegetables, honey, eggs and more. All of this presented by Common Ground High School. For more information click [HERE](#).

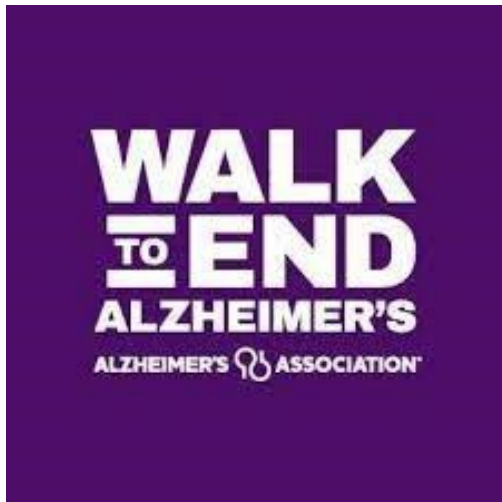
Race, Religion and Sexuality



Join us **October 13** at 8:00am at Chatham Place at Mary Wade for an informative workshop on Race,

Wade and we are looking forward to another beautiful Fall Day. You might even consider Sponsoring a Tee Sign for only \$250 in honor of a loved one or special Mary Wade staff member. Click [HERE](#) to register!

Join Our Team



According to the Alzheimer's Association, more than 6 million Americans are living with Alzheimer's. This includes many of our residents at Mary Wade and Chatham Place at Mary Wade.

In our support of the work of the Alzheimer's Association, we are walking in support of finding a cure. Employees, residents, and family members are all invited to join the Mary Wade/Chatham Place Team at the Annual Greater New Haven Walk to End Alzheimer's on **Sunday, September 29** at Lighthouse Point Park in New Haven. The event opens at 9:00am with the ceremony beginning at 10:00am and the walk beginning at 10:30am. Buses will be made available for residents of

Religion and Sexuality in Long Term Care, presented by Drazen Law. Click [HERE](#) for more information on this informative presentation and to register.

Better Breathers Update



Please be on the lookout for more information to come regarding fall Better Breathers Club meeting dates. For questions please contact Vice President of Mary Wade Lynn Iverson at GHinesIverson@marywade.org.

Be Our Guest



Why stay at a hotel when visiting your loved one during the fall when you can stay with us? Enjoy a stay at Chatham

Chatham Place and the Boardman Residence. To join our team, make a donation or for more information click [HERE](#).

A bake sale will be held at both Chatham Place and Mary Wade from 10am-2pm **September 17-19** where purple ribbons will also be on sale. All proceeds will go towards our team's donation to the Alzheimer's Association.

For questions or more information please contact Patti Scussel, 203-710-7886 or pscussel@marywade.org (Mary Wade), or Edmie Vazquez, 475-900-6040 or emluz330@yahoo.com (Chatham Place).

Chatham Place At Mary Wade



Building on Mary Wade's tradition of excellence and over 150 year history, Chatham Place offers exceptional assisted living and memory care in a setting designed for comfort, security and living well. Chatham Place invites seniors to enjoy the best of both worlds – the independent, active and social lifestyle they want with the 24-hour personalized support and security they deserve. For a tour or more information please contact Community Sales Counselor, Carolyn

Place at Mary Wade. We offer a warm and inviting stay in our guest rooms because we want you to enjoy the special moments of the summer season with your loved one. For more information click [HERE](#).

Calendar of September Events



To view Recreation's September Calendar of Events click [HERE](#). To view the Adult Day Center's September Calendar of Events please visit their webpage [HERE](#).

Kochan at
ckochan@marywade.org or visit the
Chatham Place website [HERE](#). Don't
miss out, enjoy the Chatham Place
experience.

Our Contact Information

Mary Wade Home
118 Clinton Avenue
New Haven, CT 06513
203-562-7222

[Unsubscribe](#) | [Manage email preferences](#)